

# Service Manual

*Simplified*

Notebook Computer

Model No. **CF-31ATNAXPM**

**TOUGHBOOK**

This is the Service Manual for  
the following areas.  
M ...for U.S.A. and Canada

 **WARNING**

This service information is designed for experienced repair technicians only and is not designed for use by the general public. It does not contain warnings or cautions to advise non-technical individuals of potential dangers in attempting to service a product. Products powered by electricity should be serviced or repaired only by experienced professional technicians. Any attempt to service or repair the product or products dealt with in this service information by anyone else could result in serious injury or death.

**Panasonic®**

© Panasonic Corporation 2010.  
Unauthorized copying and distribution is a violation of law.

# WARNING

## For U.K.

### **This apparatus must be earthed for your safety.**

To ensure safe operation the three-pin plug must be inserted only into a standard three-pin power point which is effectively earthed through the normal household wiring.

Extension cords used with the equipment must be three-core and be correctly wired to provide connection to earth. Wrongly wired extension cords are a major cause of fatalities.

The fact that the equipment operates satisfactorily does not imply that the power point is earthed and that the installation is completely safe.

For your safety, if you have any doubt about the effective earthing of the power point, consult a qualified electrician.

### **FOR YOUR SAFETY PLEASE READ THE FOLLOWING TEXT CAREFULLY**

This appliance is supplied with a moulded three pin mains plug for your safety and convenience.

A 3 amp fuse is fitted in this plug.

Should the fuse need to be replaced please ensure that the replacement fuse has a rating of 3 amps and that it is approved by ASTA or BSI to BS 1362.

Check for the ASTA mark  or the BSI mark  on the body of the fuse.

If the plug contains a removable fuse cover you must ensure that it is refitted when the fuse is replaced.

If you lose the fuse cover the plug must not be used until a replacement cover is obtained.

A replacement fuse cover can be purchased from your local Panasonic Dealer.

**IF THE FITTED MOULDED PLUG IS UNSUITABLE FOR THE SOCKET OUTLET IN YOUR HOME THEN THE FUSE SHOULD BE REMOVED AND THE PLUG CUT OFF AND DISPOSED OF SAFELY.**

**THERE IS A DANGER OF SEVERE ELECTRICAL SHOCK IF THE CUT OFF PLUG IS INSERTED INTO ANY 13 AMP SOCKET.**

If a new plug is to be fitted please observe the wiring code as shown below.

If in any doubt please consult a qualified electrician.


### **Warning: THIS APPLIANCE MUST BE EARTHED.**

#### **Important**

The wires in this mains lead are coloured in accordance with the following code:

|                   |         |
|-------------------|---------|
| Green-and-yellow: | Earth   |
| Blue:             | Neutral |
| Brown:            | Live    |

As the colours of the wires in the mains lead of this apparatus may not correspond with the coloured markings identifying the terminals in your plug, proceed as follows:

The wire which is coloured GREEN-and-YELLOW must be connected to the terminal in the plug which is marked by the letter E or by the safety earth symbol  coloured GREEN or GREEN-and-YELLOW.

The wire which is coloured Blue must be connected to the terminal which is marked with the letter N or coloured BLACK.

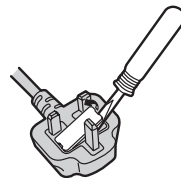
The wire which is coloured Brown must be connected to the terminal which is marked with the letter L or coloured RED.

The mains plug on this equipment must be used to disconnect the mains power.

Please ensure that a socket outlet is available near the equipment and shall be easily accessible.

### **How to replace the fuse**

Open the fuse compartment with a screwdriver and replace the fuse.



#### **Warnings**

- This equipment is not designed for connection to an IT power system.  
(An IT system is a system having no direct connections between live parts and Earth; the exposed-conductive-parts of the electrical installation are earthed.  
An IT system is not permitted where the computer is directly connected to public supply systems in the U.K.)
- Disconnect the mains plug from the supply socket when the computer is not in use.

This equipment is produced to BS800/1983.

# LASER SAFETY INFORMATION

## For U.S.A.

Class 1 LASER-Product

This product is certified to comply with DHHS Rules 21 CFR Subchapter J.

This product complies with European Standard EN60825 (or IEC Publication 825)

For all areas

This equipment is classified as a class 1 level LASER product and there is no hazardous LASER radiation.

### Caution:

- (1) Use of controls or adjustments or performance of procedures other than those specified herein may result in hazardous radiation exposure.
- (2) The drive is designed to be incorporated into a computer-based system or unit which has an enclosing cover. It should never be used as a stand alone drive.

### Danger:

The serviceman should not remove the cover of drive unit and should not service because the drive unit is a nonserviceable part.  
Please check DANGER label on PD-drive unit.

- Unplug the AC power cord to the equipment before opening the top cover of the drive.  
When the power switch it on, do not place your eyes close to the front panel door to look into the interior of the unit.

### LASER Specification

Class 1 level LASER Product

Wave Length: DVD 658±8 nm

CD 775~815 nm

Laser safety information is appropriate only when drive with laser is installed.

# SAFETY PRECAUTIONS

1. Before servicing, unplug the power cord to prevent an electric shock.
2. When replacing parts, use only manufacture's recommended components for safety.
3. Check the condition of the power cord. Replace if wear or damage is evident.
4. After servicing, be sure to restore the lead dress, insulation barriers, insulation papers, shields, etc.

## Important Safety Instructions

When using your telephone equipment, basic safety precautions should always be followed to reduce the risk of fire, electric shock and injury to persons, including the following:

1. Do not use this product near water, for example, near a bath tub, wash bowl, kitchen sink or laundry tub, in a wet basement or near a swimming pool.
2. Avoid using a telephone (other than a cordless type) during an electrical storm. There may be a remote risk of electric shock from lightning.
3. Do not use the telephone to report a gas leak in the vicinity of the leak.
4. Use only the power cord and batteries indicated in this manual. Do not dispose of batteries in a fire. They may explode. Check with local codes for possible special disposal instructions.

SAVE THESE INSTRUCTIONS

## LITHIUM BATTERY

This computer contains a lithium battery to enable the date, time, and other data to be stored. The battery should only be exchanged by authorized service personnel.

Warning! A risk of explosion from incorrect installation or misapplication may possibly occur.

### LITHIUM BATTERY ⚠

#### • CAUTION

Danger of explosion if battery is incorrectly replaced.

Replace only with the same or equivalent type battery recommended by the manufacturer.

Dispose of used batteries according to the manufacturer's instructions.

### LITHIUMBATTERIES ⚠

#### Vorsicht!

Explosionsgefahr bei unsachgemäßem Austausch der Batterie. Ersatz nur durch denselben oder einen vom Hersteller empfohlenen ähnlichen Typ. Entsorgung gebrauchter Batterien nach Angaben des Herstellers.

### PILE AU LITHIUM ⚠

ATTENTION: IL Y A DANGER D'EXPLOSION S' IL Y A REMPLACEMENT INCORRECT DE LA PILE. REMPLACER UNIQUEMENT AVEC UNE PILE DU MÊME TYPE OU D'UN TYPE RECOMMANDÉ PAR LE CONSTRUCTEUR. METTRE AU RÉBUT LES PILES USAGÉES CONFORMÉMENT AUX INSTRUCTIONS DU FABRICANT.

## Precautions (Battery Pack)

### Do Not Use With Any Other Product

The battery pack is rechargeable and was intended for the specified product. If it is used with a product other than the one for which it was designed, electrolyte leakage, generation of heat, ignition or rupture may result.

### Do Not Charge the Battery Using Methods Other Than Those Specified

If the battery is not charged using one of the specified methods, electrolyte leakage, generation of heat, ignition or rupture may result.

### Do Not Throw the Battery Pack Into a Fire or Expose It to Excessive Heat

Generation of heat, ignition or rupture may result.

### Avoid Extreme Heat (Near the Fire, In Direct Sunlight, for Example)

Electrolyte leakage, generation of heat, ignition or rupture may result.

### Do Not Insert Sharp Objects Into the Battery Pack, Expose It to Bumps or Shocks, Disassemble, or Modify It

Electrolyte leakage, generation of heat, ignition or rupture may result.

- If this product is subjected to a strong impact, stop using it immediately.

### Do Not Short the Positive (+) and Negative (-) Contacts

Generation of heat, ignition or rupture may result.

- Do not place the battery pack together with articles such as necklaces or hairpins when carrying or storing.

### Do Not Use This Product with a Battery Pack Other Than the One Specified

Use only the specified battery pack (CF-VZSU46AU) with your product. Use of battery packs other than those manufactured and supplied by Panasonic may present a safety hazard (generation of heat, ignition or rupture).

### When the battery pack has become degraded, replace it with a new one

Continued use of a damaged battery pack may result in heat generation, ignition or battery rupture.

- Do not touch the terminals on the battery pack. The battery pack may no longer function properly if the contacts are dirty or damaged.
- Do not expose the battery pack to water, or allow it to become wet.
- If the battery pack will not be used for a long period of time (a month or more), charge or discharge (use) the battery pack until the remaining battery level becomes 30% to 40% and store it in a cool, dry place.
- This computer prevents overcharging of the battery by recharging only when the remaining power is less than approx. 95% of capacity.



- The battery pack is not charged when the computer is first purchased. Be sure to charge it before using it for the first time. When the AC adaptor is connected to the computer, charging begins automatically.
- Should the battery leak and the fluid get into your eyes, do not rub your eyes. Immediately flush your eyes with clear water and see a doctor for medical treatment as soon as possible.

#### CAUTION:

Risk of Explosion if Battery is replaced by an Incorrect Type. Dispose of Used Batteries According to the Instructions.

58-E-1

#### NOTE

- The battery pack may become warm during recharging or normal use. This is completely normal.
- Recharging will not commence if internal temperature of the battery pack is outside of the allowable temperature range (0 °C to 50 °C {32°F to 122 °F}).  
(→  *Reference Manual* "Battery Power") Once the allowable range requirement is satisfied, charging begins automatically. Note that the recharging time varies based on the usage conditions. (Recharging takes longer than usual when the temperature is 10 °C {50 °F} or below.)
- If the temperature is low, the operating time is shortened. Only use the computer within the allowable temperature range.
- This computer has a high temperature mode function that prevents the degradation of the battery in high temperature environments. (→  *Reference Manual* "Battery Power") A level corresponding to a 100% charge for high temperature mode is approximately equivalent to an 80% charge level for normal temperature mode.
- The battery pack is a consumable item. If the amount of time the computer can be run by using a particular battery pack becomes dramatically shorter and repeated recharging does not restore its performance, the battery pack should be replaced with a new one.
- When transporting a spare battery inside a package, briefcase, etc., it is recommended that it be placed in a plastic bag so that its contacts are protected.
- Always power off the computer when it is not in use. Leaving the computer on when the AC adaptor is not connected will exhaust the remaining battery capacity.



A lithium ion battery that is recyclable powers the product you have purchased. Please call 1-800-8-BATTERY for information on how to recycle this battery.

L'appareil que vous vous êtes procuré est alimenté par une batterie au lithium-ion. Pour des renseignements sur le recyclage de la batterie, veuillez composer le 1-800-8-BATTERY.

48-M-1

## Precautions (AC Adaptor)

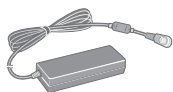
*FOR USE WITH MODEL NO. **CF-AA5713A***

---

*POUR UTILISER AVEC MODÈLE **CF-AA5713A***

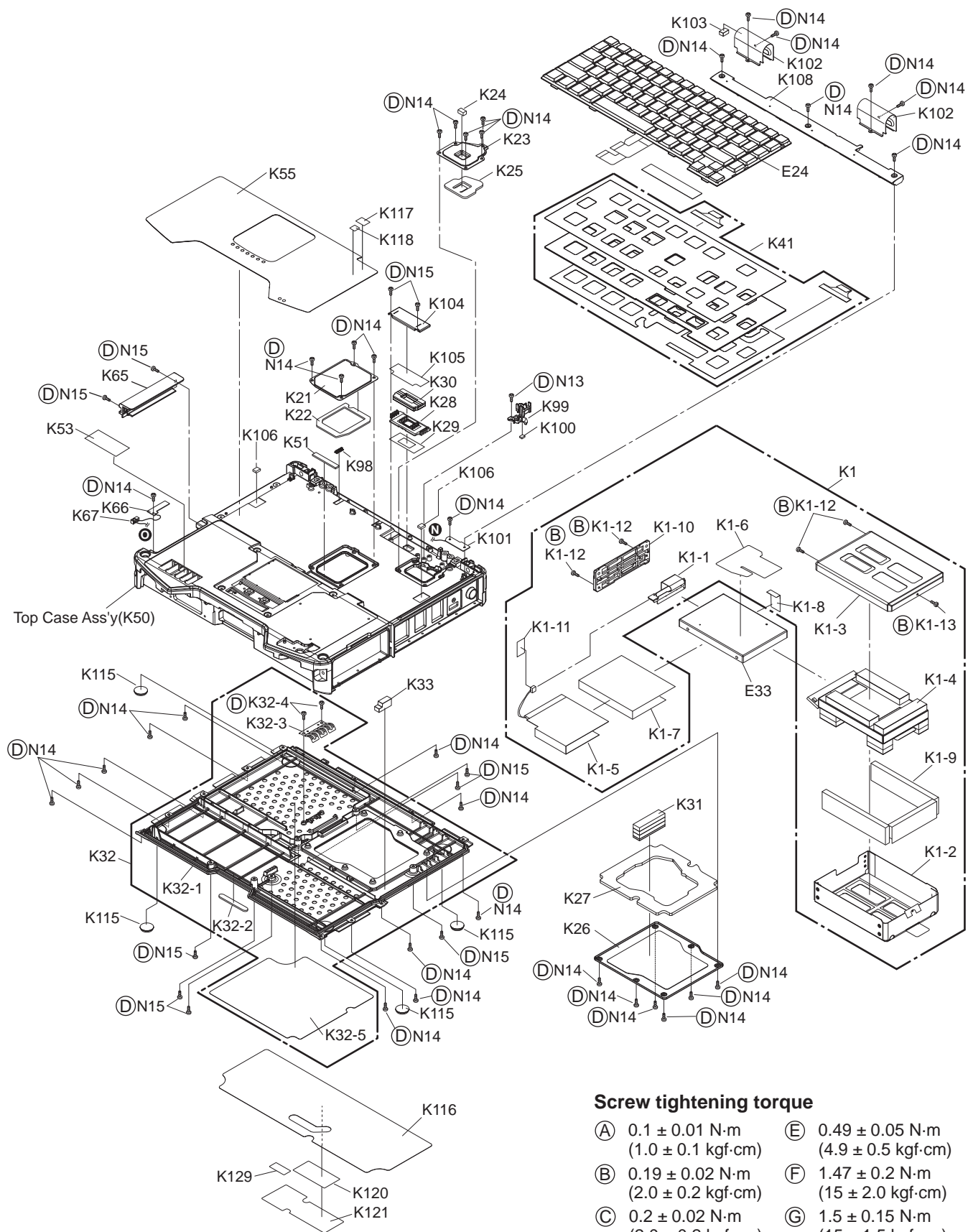
### **Use Only the Specified AC Adaptor With This Product**

Using an AC adaptor other than the one supplied (attached to your product or supplied by Panasonic) may result in a fire.



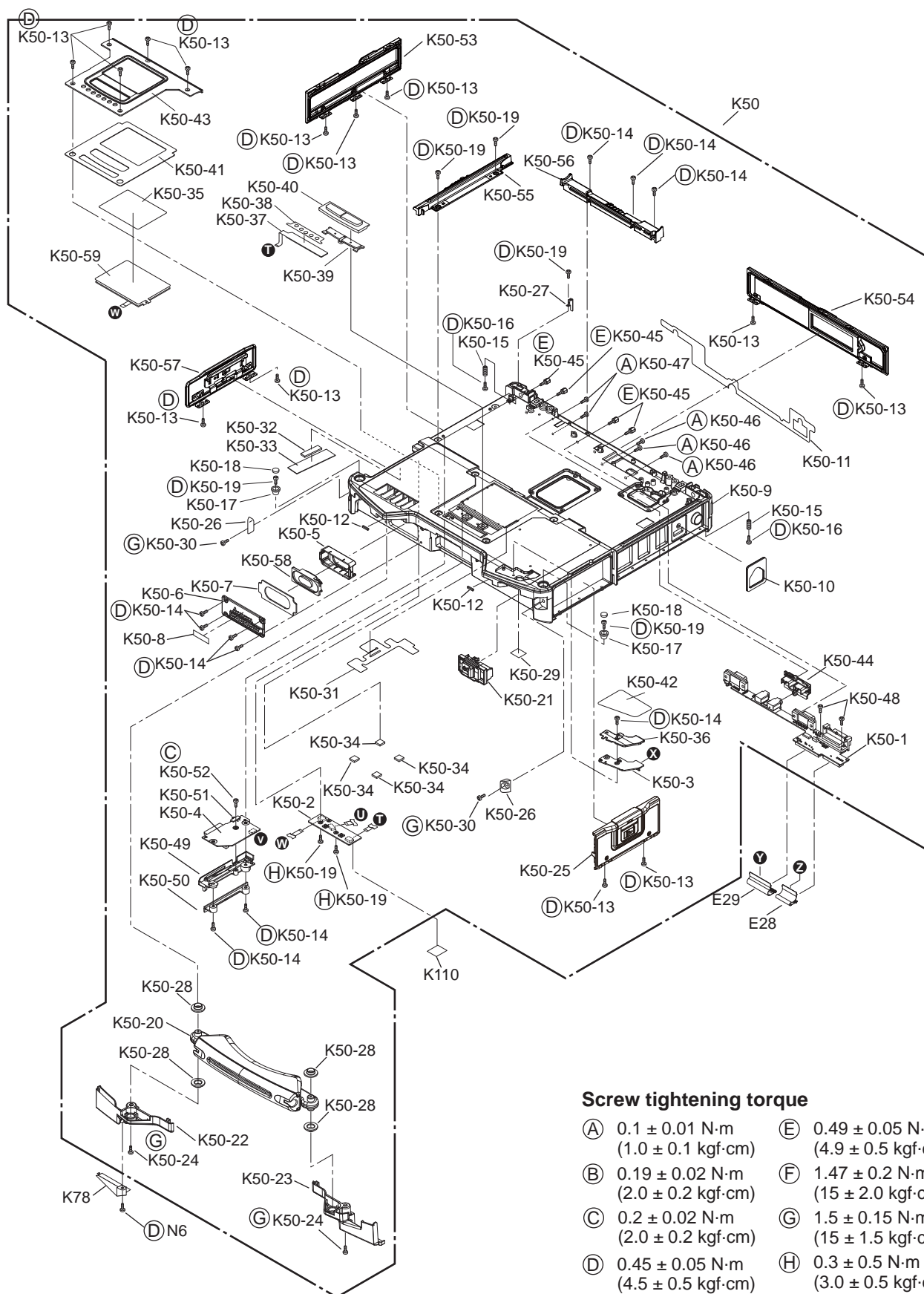
Model No: CF-AA5713A

## Exploded View



### Screw tightening torque

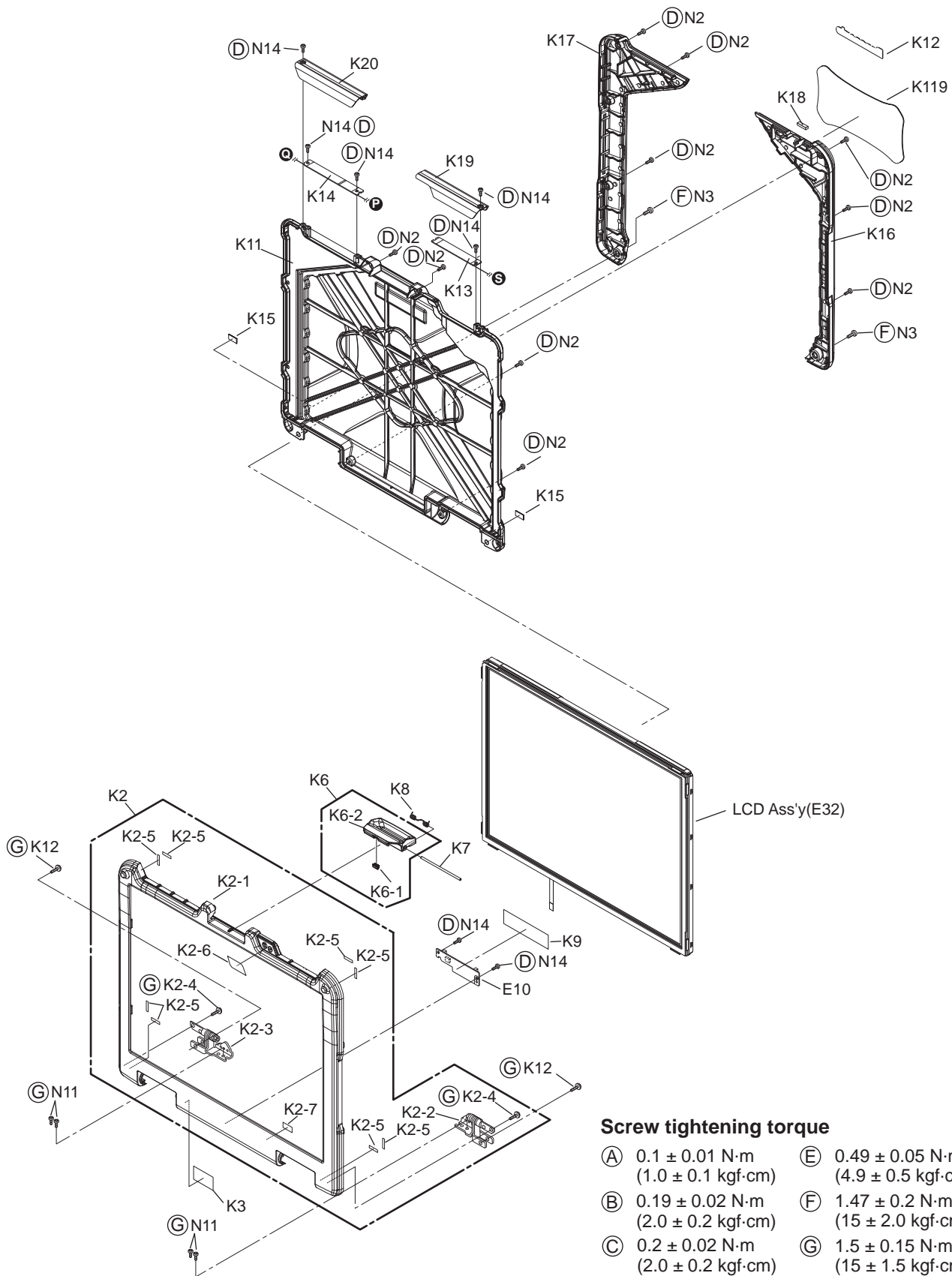
- (A)  $0.1 \pm 0.01 \text{ N}\cdot\text{m}$   
 ( $1.0 \pm 0.1 \text{ kgf}\cdot\text{cm}$ )
- (B)  $0.19 \pm 0.02 \text{ N}\cdot\text{m}$   
 ( $2.0 \pm 0.2 \text{ kgf}\cdot\text{cm}$ )
- (C)  $0.2 \pm 0.02 \text{ N}\cdot\text{m}$   
 ( $2.0 \pm 0.2 \text{ kgf}\cdot\text{cm}$ )
- (D)  $0.45 \pm 0.05 \text{ N}\cdot\text{m}$   
 ( $4.5 \pm 0.5 \text{ kgf}\cdot\text{cm}$ )
- (E)  $0.49 \pm 0.05 \text{ N}\cdot\text{m}$   
 ( $4.9 \pm 0.5 \text{ kgf}\cdot\text{cm}$ )
- (F)  $1.47 \pm 0.2 \text{ N}\cdot\text{m}$   
 ( $15 \pm 2.0 \text{ kgf}\cdot\text{cm}$ )
- (G)  $1.5 \pm 0.15 \text{ N}\cdot\text{m}$   
 ( $15 \pm 1.5 \text{ kgf}\cdot\text{cm}$ )
- (H)  $0.3 \pm 0.5 \text{ N}\cdot\text{m}$   
 ( $3.0 \pm 0.5 \text{ kgf}\cdot\text{cm}$ )



### Screw tightening torque

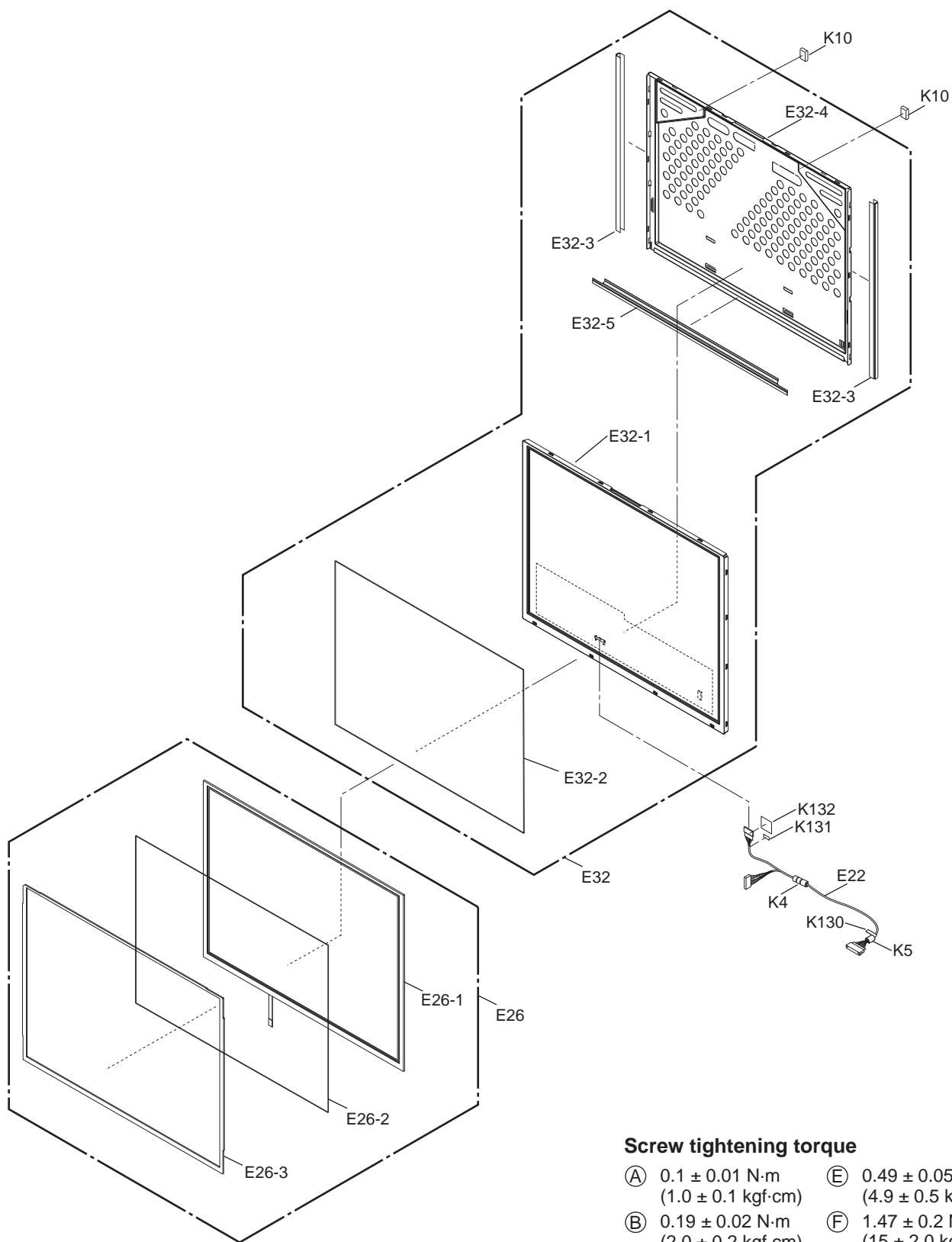
|   |   |
|---|---|
| (A) $0.1 \pm 0.01 \text{ N}\cdot\text{m}$<br>( $1.0 \pm 0.1 \text{ kgf}\cdot\text{cm}$ )  | (E) $0.49 \pm 0.05 \text{ N}\cdot\text{m}$<br>( $4.9 \pm 0.5 \text{ kgf}\cdot\text{cm}$ ) |
| (B) $0.19 \pm 0.02 \text{ N}\cdot\text{m}$<br>( $2.0 \pm 0.2 \text{ kgf}\cdot\text{cm}$ ) | (F) $1.47 \pm 0.2 \text{ N}\cdot\text{m}$<br>( $15 \pm 2.0 \text{ kgf}\cdot\text{cm}$ )   |
| (C) $0.2 \pm 0.02 \text{ N}\cdot\text{m}$<br>( $2.0 \pm 0.2 \text{ kgf}\cdot\text{cm}$ )  | (G) $1.5 \pm 0.15 \text{ N}\cdot\text{m}$<br>( $15 \pm 1.5 \text{ kgf}\cdot\text{cm}$ )   |
| (D) $0.45 \pm 0.05 \text{ N}\cdot\text{m}$<br>( $4.5 \pm 0.5 \text{ kgf}\cdot\text{cm}$ ) | (H) $0.3 \pm 0.5 \text{ N}\cdot\text{m}$<br>( $3.0 \pm 0.5 \text{ kgf}\cdot\text{cm}$ )   |





### Screw tightening torque

|   |   |
|---|---|
| (A) $0.1 \pm 0.01 \text{ N}\cdot\text{m}$<br>( $1.0 \pm 0.1 \text{ kgf}\cdot\text{cm}$ )  | (E) $0.49 \pm 0.05 \text{ N}\cdot\text{m}$<br>( $4.9 \pm 0.5 \text{ kgf}\cdot\text{cm}$ ) |
| (B) $0.19 \pm 0.02 \text{ N}\cdot\text{m}$<br>( $2.0 \pm 0.2 \text{ kgf}\cdot\text{cm}$ ) | (F) $1.47 \pm 0.2 \text{ N}\cdot\text{m}$<br>( $15 \pm 2.0 \text{ kgf}\cdot\text{cm}$ )   |
| (C) $0.2 \pm 0.02 \text{ N}\cdot\text{m}$<br>( $2.0 \pm 0.2 \text{ kgf}\cdot\text{cm}$ )  | (G) $1.5 \pm 0.15 \text{ N}\cdot\text{m}$<br>( $15 \pm 1.5 \text{ kgf}\cdot\text{cm}$ )   |
| (D) $0.45 \pm 0.05 \text{ N}\cdot\text{m}$<br>( $4.5 \pm 0.5 \text{ kgf}\cdot\text{cm}$ ) | (H) $0.3 \pm 0.5 \text{ N}\cdot\text{m}$<br>( $3.0 \pm 0.5 \text{ kgf}\cdot\text{cm}$ )   |




### Screw tightening torque

|   |   |
|---|---|
| Ⓐ $0.1 \pm 0.01 \text{ N}\cdot\text{m}$<br>( $1.0 \pm 0.1 \text{ kgf}\cdot\text{cm}$ )  | Ⓔ $0.49 \pm 0.05 \text{ N}\cdot\text{m}$<br>( $4.9 \pm 0.5 \text{ kgf}\cdot\text{cm}$ ) |
| Ⓑ $0.19 \pm 0.02 \text{ N}\cdot\text{m}$<br>( $2.0 \pm 0.2 \text{ kgf}\cdot\text{cm}$ ) | Ⓕ $1.47 \pm 0.2 \text{ N}\cdot\text{m}$<br>( $15 \pm 2.0 \text{ kgf}\cdot\text{cm}$ )   |
| Ⓒ $0.2 \pm 0.02 \text{ N}\cdot\text{m}$<br>( $2.0 \pm 0.2 \text{ kgf}\cdot\text{cm}$ )  | Ⓖ $1.5 \pm 0.15 \text{ N}\cdot\text{m}$<br>( $15 \pm 1.5 \text{ kgf}\cdot\text{cm}$ )   |
| Ⓓ $0.45 \pm 0.05 \text{ N}\cdot\text{m}$<br>( $4.5 \pm 0.5 \text{ kgf}\cdot\text{cm}$ ) | Ⓗ $0.3 \pm 0.5 \text{ N}\cdot\text{m}$<br>( $3.0 \pm 0.5 \text{ kgf}\cdot\text{cm}$ )   |

# Replacement Parts List Comparison Table

## Note : Important Safety Notice

Components identified by  mark have special characteristics important for safety.  
When replacing any of these components, use only manufacturer's specified parts.

## CF-31ATNAXPM

| REF. NO and AREA | PART NO.       |              | DESCRIPTION             | Q'TY |
|------------------|----------------|--------------|-------------------------|------|
|                  | CF-31ATAAXDM   | CF-31ATNAXPM |                         |      |
| Main Block Unit  |                |              |                         |      |
| E1               | DL3UP1897BAA   | DL3UP1897DAA | MAIN PWB RTL            | 1    |
| E23              | ⚠ N3CAYYY00068 | -----        | HDD SATA 5400rpm, 160GB | 1→0  |
| E33              | ⚠ -----        | N3CAYYY00069 | HDD SATA 5400rpm, 250GB | 0→1  |
| Accessories      |                |              |                         |      |
| A1               | ⚠ DFQW5375ZA   | DFQW5375ZB   | (E)MANUAL               | 1    |
|                  |                |              |                         |      |
| Mechanical Parts |                |              |                         |      |
| K52              | DFHR9171ZA     | DFHR9171YA   | SERIAL COVER ASSY       | 1    |
| K56              | DFHR9172ZA     | DFHR9172YA   | HDMI COVER ASSY         | 1    |
| K58              | DFHR9176ZA     | DFHR9176YA   | LAN COVER ASSY          | 1    |
| K60              | DFHR9173ZA     | DFHR9173YA   | CONFIG COVER ASSY       | 1    |
| K61              | DFHR9175ZA     | DFHR9175YA   | USB COVER ASSY          | 1    |
| K62              | DFHR9174ZA     | DFHR9174YA   | DC-IN COVER ASSY        | 1    |
| K127             | DFQT0092ZA     | -----        | WINDOWS 7 LOGO LABEL    | 1→0  |
| K133             | -----          | DFMY0528ZA   | VGA HEAT RUBBER         | 0→1  |
| K134             | -----          | DFMY0529ZA   | VRAM HEAT RUBBER        | 0→4  |